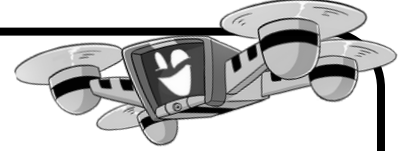


FlyCode App User's Guide

The Drone Legends FlyCode app gives you full control of your Tello drone. Whether you're flying for fun or using it in a classroom, this guide will help you install the app, set up your drone, and understand the controls.



Introduction

System Requirements

Supported Drones

- DJI Tello
- Tello EDU
- RoboMaster TT (Tello Talent)

Supported Devices

- iOS 13.0 or later
- Android 10.0 or later
- Must support 24GHz Wi-Fi networks

App Installation

iOS

Find and download the app from the App Store, open the app and accept all agreements and permissions.

Android

Find and download the app from Google Play, open the app and accept all agreements and permissions.

Tutorial

In-App Tutorial

When you open the FlyCode app for the first time Gimbal will lead you through an on-screen tutorial. Note that the on-screen controls will not be functional during the tour. When the on-screen tour is done, follow along as Gimbal walks you through the following steps to power on Tello.

Powering On and Connecting

Set Tello on a flat surface. Make sure it's facing you so you can see the light. Press and hold the power button on the side of the drone for two seconds until the lights turn on.

Startup check: The light will flash red → green → yellow.

Pairing mode: The light will flash yellow while waiting to connect.

Connected: When the light changes to a slow blinking green, your drone is ready to fly.



FlyCode App User's Guide

Set Up

Setting Tello up in FlyCode

With the drone on, return to the FlyCode app. If this is your first time using the app you will see a colored square on the drone Setup screen. If you do not see a colored square you can open the Drone Setup screen by tapping Settings, then tapping Setup Drone in the top right corner.

Tap the square and a keyboard will appear. Enter the WiFi name, or SSID, of the drone you want to associate with the given color on this device. You can enter the whole SSID, such as TELLO-12A345 or you can enter just the number/character sequence, such as 12A345. Tap return when done.

To set up more than one drone tap the plus symbol found at the bottom, left corner of the screen and repeat the above steps for each square. You can associate up to ten Tello drones with each device.

When you're done setting up your Tello(s) you can tap the option to Hide at Startup if you want to skip this screen the next time the app is opened. You will always be able to access this screen by tapping Settings, and then tapping Setup Drone found in the upper right hand corner of the Settings screen.

Connect

Connecting to Tello

The Drone Selection Screen has colored circles that each represent a Tello that's associated with your device. If you're on the Drone Selection Screen, simply tap the drone you wish to fly.

If you are still in the Drone Setup Screen, tap the Select Drone button found at the bottom center of the screen. If you are in the Flight Mode screen, tap the blue exclamation mark icon at the top center of the screen.

Trouble Shooting

If you have any questions or require support email us at flycodesupport@dronelegends.com.

App troubleshooting

- restart both the drone and the app
- turn on airplane mode on your device

Tello troubleshooting

- Use the official TELLO app to calibrate your drone's IMU and center of gravity
- Replace the battery